

# 3DEXPERIENCE - 3D Designer Cloud Package

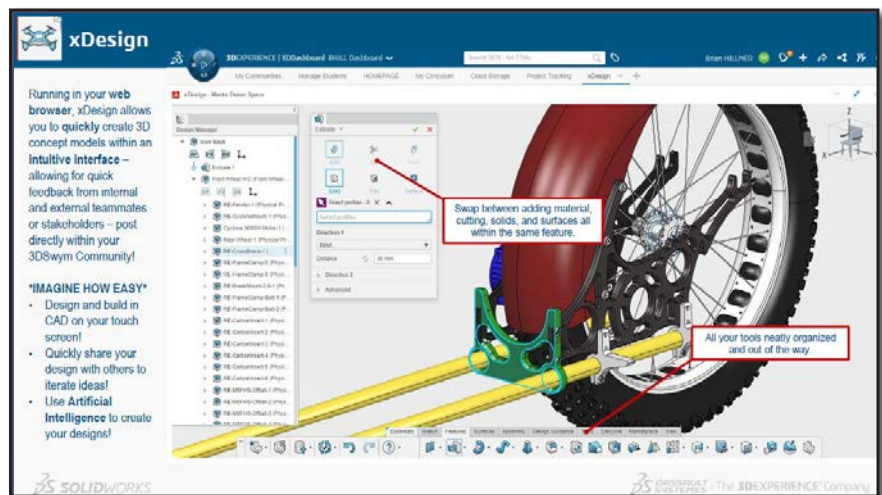
For over a decade, SOLIDWORKS Education Edition has been a very popular 3D CAD package for use in education due to its powerful facilities and ease of use, and its recognition in industry. Now Dassault Systemes, the writers of SOLIDWORKS have come out with the cloud-based CAD system called 3DEXPERIENCE. This new package does not require the use of Windows PCs and is available for use on different operating systems and lower specification computers including Macs and Chromebooks.



## Main Applications:

### xDesign

xDesign is a browser-based 3D modelling solution that enables designers and engineers to create, review and evaluate 3D Models through easy-to-use parametric modelling capabilities. In xDesign, you will find both familiar sketch and feature tools, but you will also discover a host of innovative ways to tackle design challenges quickly, such as automatic design intent constraints as you model. You will also be able to better understand structural requirements such as support loads and constraints before creating geometry through an easy exploration of optimal material with Design Guidance.

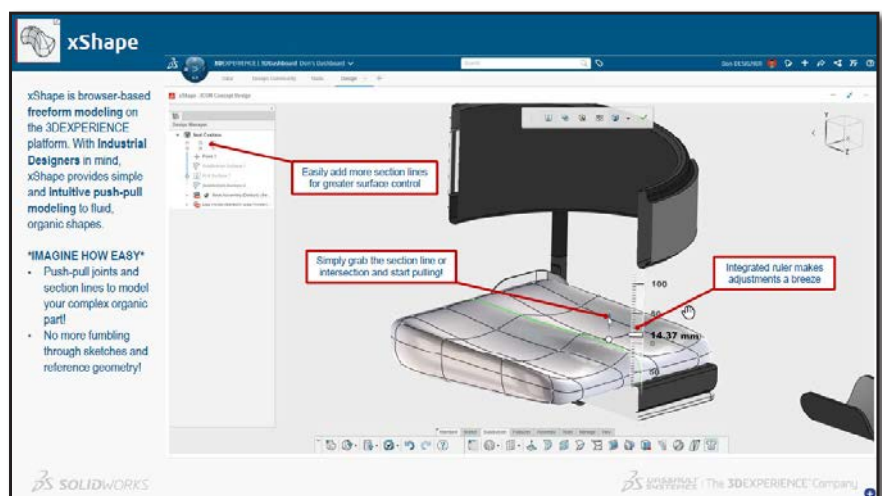


### xShape

xShape is a lot like clay modelling but on a computer. Most designers typically start with either a sketch, imported image, or actual 3D models as reference in the background and then design around those shapes or you can also create shapes using no reference on the screen – just freehand design.

xShape is very easy to use and fast to learn. You start with a 3D Shape or a 2D surface and simply push, pull, scale, crease and bend your sub-D model to get the shape you desire.

Designs that take hours to create with traditional parametric surface modelling may take only a few minutes to create with xShape. Changes that often require a designer to start the whole design over with a parametric surface modeler may take seconds in xShape.



## What are the main features of 3DEXPERIENCE Platform?

### No Installation



On the cloud, 3DEXPERIENCE works on multiple devices, requiring only internet access. This solution comes with zero installation and no extra IT efforts.

### Instantly Available



The 3DEXPERIENCE platform is instantly available on devices on-the-fly, and fully configured in minutes.

### Social Collaboration



Innovate, collaborate and work together in real time with your students with tools to help manage your projects, track your students work and provide feedback.

### Dashboard



3DEXPERIENCE is centred around a dashboard which users can easily customise. The dashboard is the platform's control station providing easy access to every part of 3DEXPERIENCE and other sources of information e.g., community news, feeds, pages on the internet.

3DEXPERIENCE for Education offers a new way for students and educators to work in the cloud. The heart of the 3DEXPERIENCE platform is collaboration, making it an ideal environment for a virtual classroom.

The 3DEXPERIENCE platform is available with five package sizes ranging from 10 users to 900 users to meet the needs of diverse institutions in higher and secondary education:

Extra Small	Small	Medium	Large	Extra Large
10 Users	30 Users	100 Users	300 Users	900 Users



**3DEXPERIENCE®**



### Prices:

Package:	Product Code:	Users:	Annual Fee (ex VAT):
Extra Small	3DX-DE-XS-YP	Up to 10 users	£468.00
Small	3DX-DE-S-YP	Up to 30 users	£720.00
Medium	3DX-DE-M-YP	Up to 100 users	£1,245.00
Large	3DX-DE-L-YP	Up to 300 users	£2,060.00
Extra Large	3DX-DE-XL-YP	Up to 900 users	£3,245.00

Please note that you do not need a SOLIDWORKS licence in order to purchase a 3DEXPERIENCE subscription.